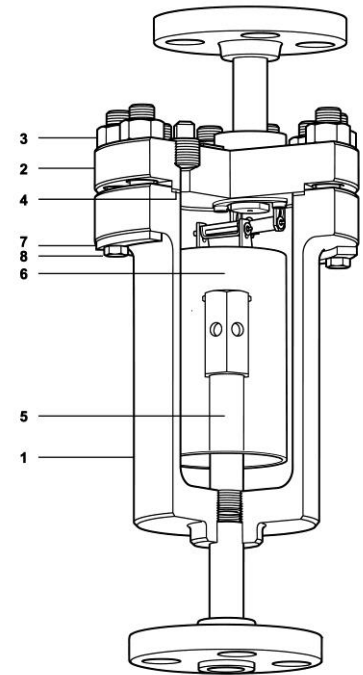


Description

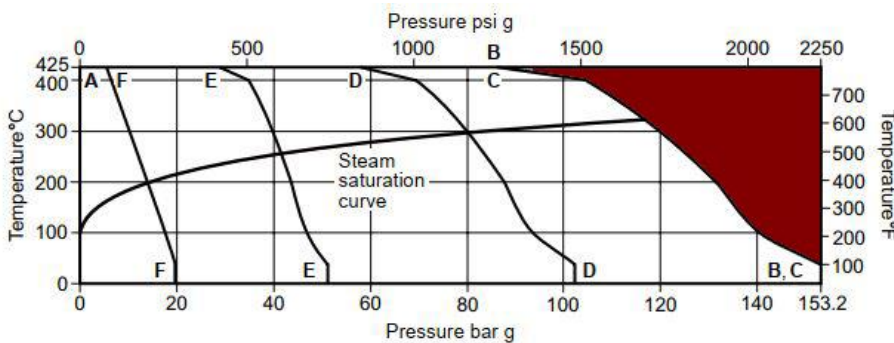
The IBV inverted bucket steam trap is manufactured using alloy steel for the body and cover; with internal components being made of stainless steel. It is suitable for use with saturated and superheated steam and in high pressure and high temperature applications. The IBV is fully automatic and has been designed in such a way that there is minimal friction from mechanism movement; valve closure is immediate, without any steam loss and the discharge action is positive with no equivocal phases.

Material

No.	Parts	Material
1	Body	A105
2	Cover	A105
3	Cover Bolts	A193 B16
4	Cover Gasket	Reinforced graphite
5	Channeling Pipe	AISI 316
6	Bucket	AISI 316
7	Bracket	AISI 316
8	Bracket Screw	AISI 316



Pressure/Temperature limits



The product **must not** be used in this region or beyond the parameter of the PMA or TMA of the relative end connection.

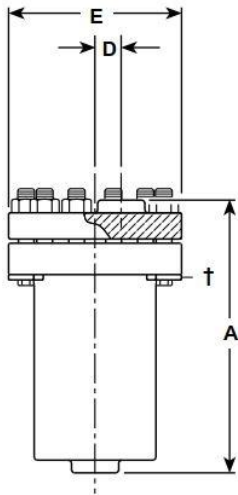
- A-F: ASME class 150
- E-E: ASME class 300
- D-D: ASME class 600
- C-C: ASME class 900
- B-B: Screwed/Socket welded

Body design conditions	ASME Class 150	ASME Class 300	ASME Class 600	ASME Class 900/ Screwed/ Socket weld
PMA - Maximum allowable pressure	19.5 bar g @ 38 °C	51.1 bar g @ 38 °C	100.2bar g @ 38 °C	153.2 barg @ 38°C
TMA - Maximum allowable temperature	425 °C @ 5.5 bar g	425 °C @ 28.8 bar g	425 °C @ 57.5 bar g	425 °C @ 86.3 bar g
PMO - Maximum operating pressure for saturated steam service	14 bar g	41.7 bar g	79.9 bar g	116.3 bar g
TMO - Maximum operating temperature	425 °C @ 5.5 bar g	425°C @ 28.8 bar g	425 °C @57.5 bar g	425 °C @ 86.3 bar g
Maximum cold hydraulic test	25.3 bar g	67 bar g	133.9 bar g	200 bar g

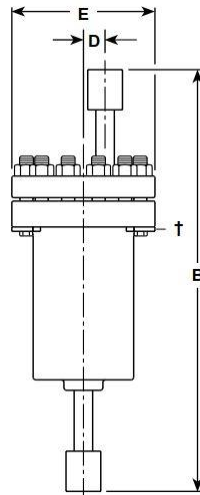
*The PMO is limited to the maximum DP of the selected IBV.

Dimensions/Weights (approximate) in mm and Kg

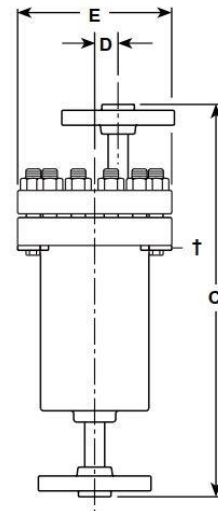
Size	Dimensions					Weight					
	A	B	C	D	E	Screw	Socket Weld	Flanged ASME Class			
								150	300	600	900
1/2"	260	488	420	25	165	20	18	20	20	20	22
3/4"	260	488	420	25	165	26	24	26	28	28	30
1"	345	616	530	40	210	42	39	42	44	44	48
1 1/2"	411	774	650	39	265	68	65	70	72	72	78
2"	411	782	650	39	265	68	65	72	74	76	88
3"	532	1026	850	36	305	125	120	132	136	138	152



Socket Welded

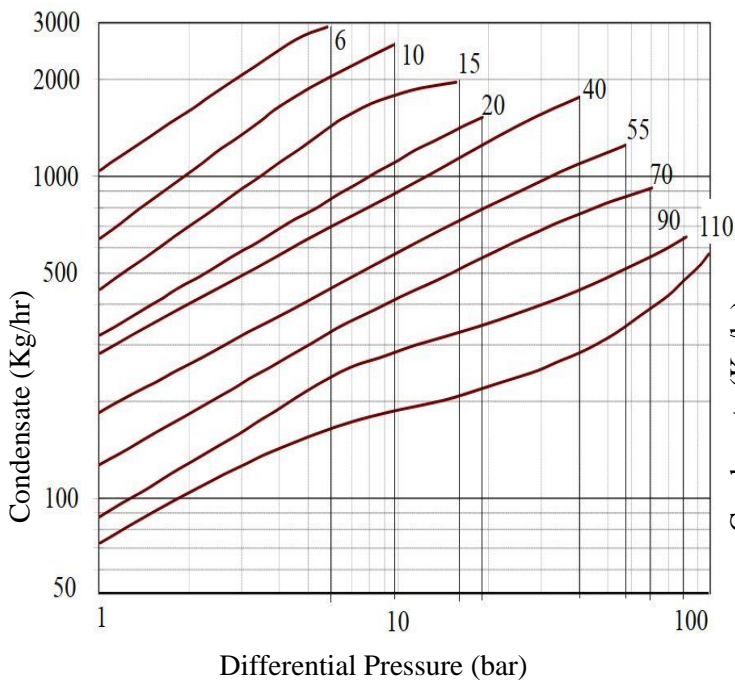


Screwed

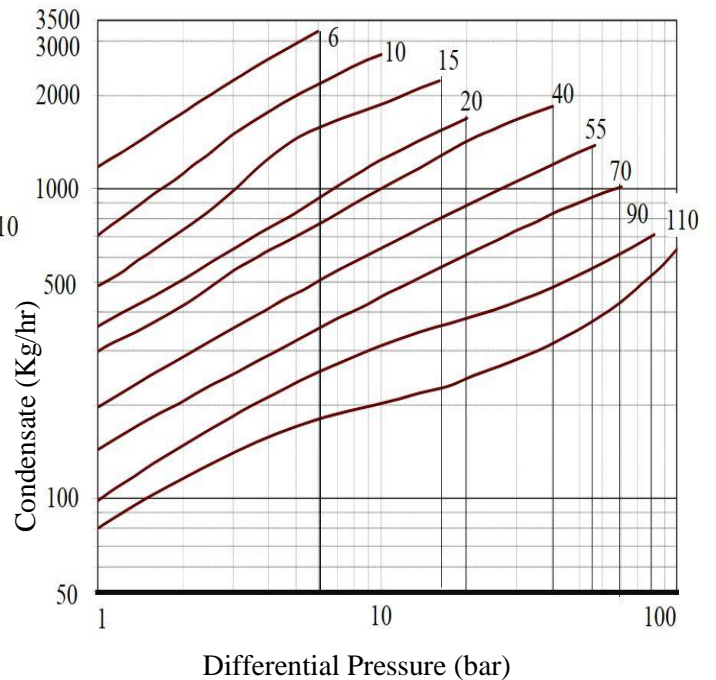


Flanged

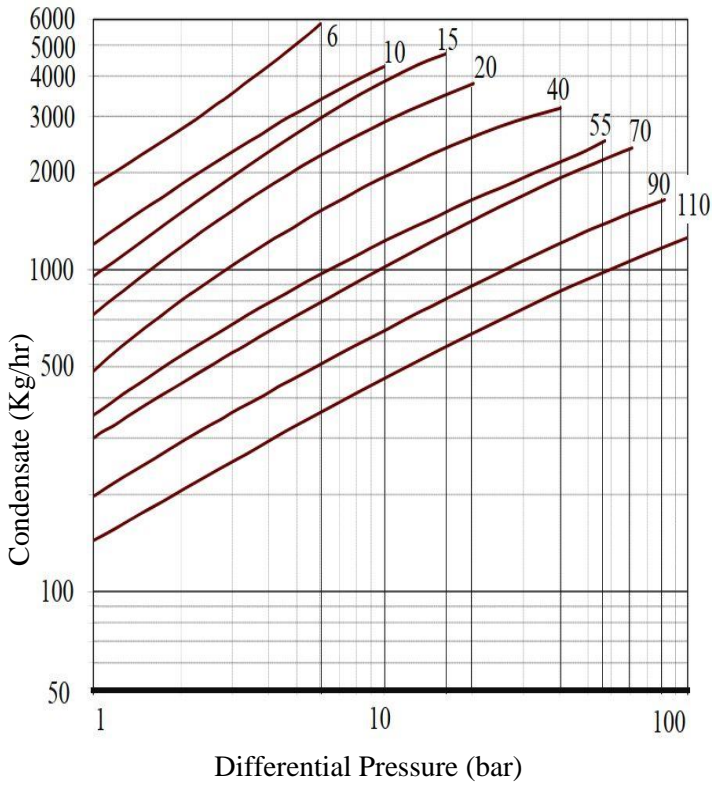
Capacities-DN15 (1/2 IN)



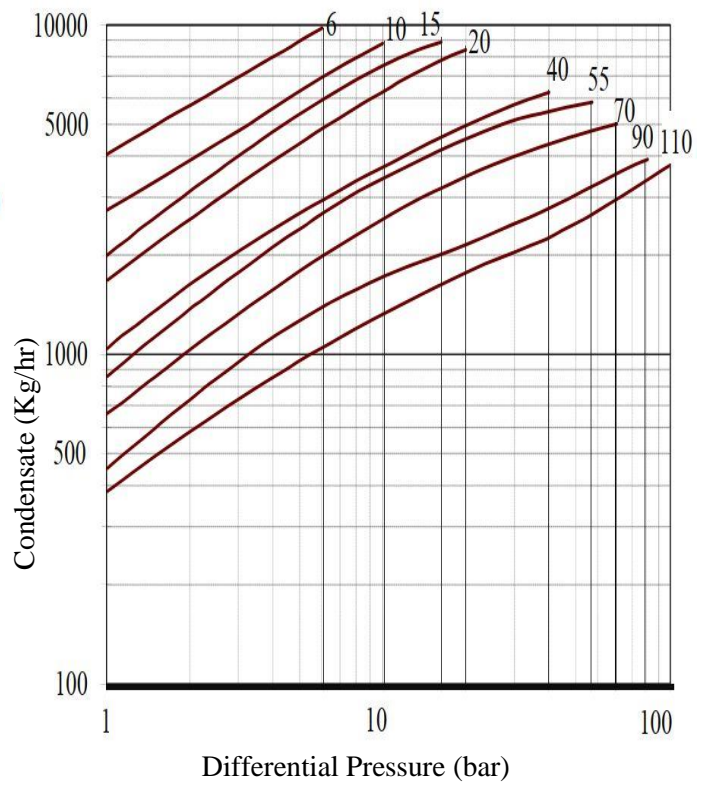
Capacities-DN20 (3/4 IN)



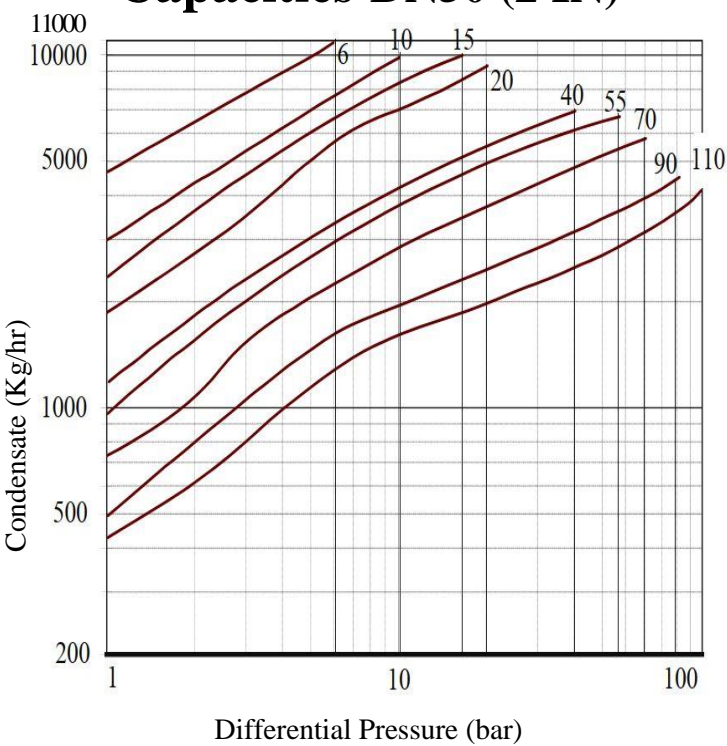
Capacities-DN25 (1 IN)



Capacities-DN40 (1 1/2 IN)



Capacities-DN50 (2 IN)



Capacities-DN80 (3 IN)

