

## Steam Trap

### Description:

The KARAJET TD42 is an inline repairable carbon steel thermodynamic steam trap with an integral strainer for medium pressure applications.

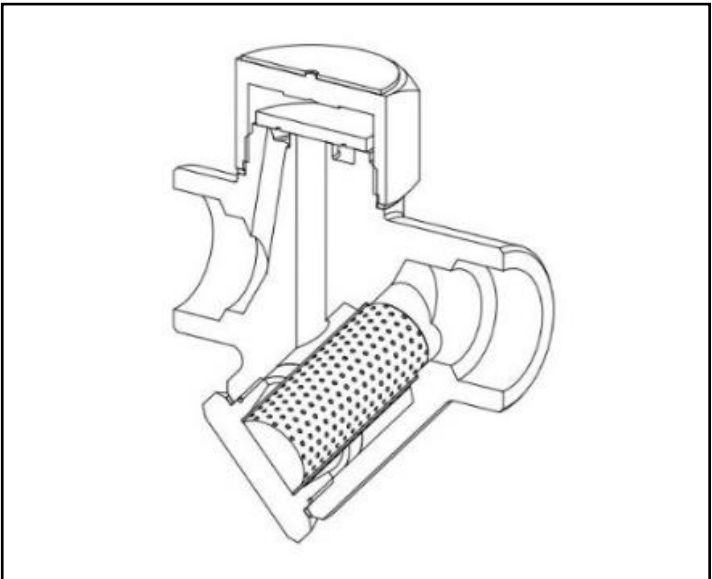
### Size and Pipe Connections:

DN15 to DN25  
Screwed BSPT/NPT/BSP and Socket Weld ends.  
Available with Class 150, 300 Flanges.  
Other sizes are available for flanged connection by request.

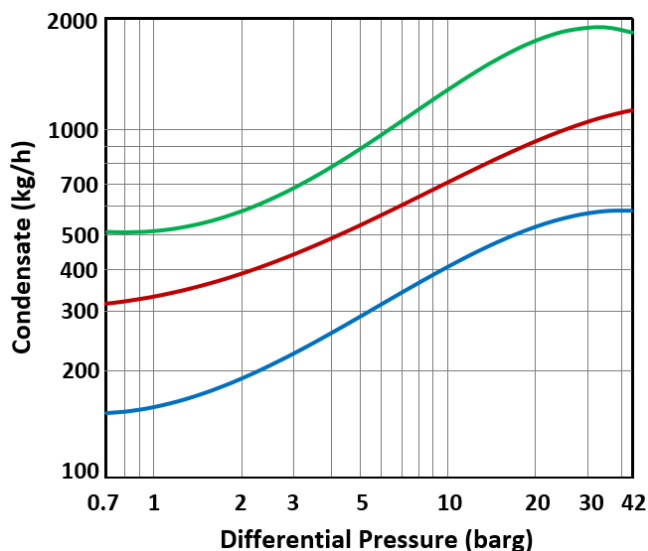
### Material and Options:

Other body materials such as Stainless Steel A182 F304-F316, Stainless Steel 420, Stainless Steel A743CA40 / A743CA40F are available by request.

Removable seat is also available by request (TD42R).

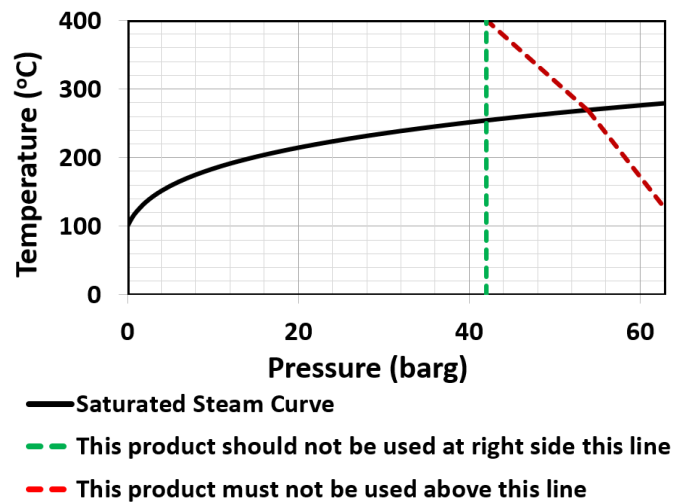


### Capacity Curve:



— TD42 - 1"    — TD42 - 0.75"    — TD42 - 0.5"

### Limiting Conditions:



Body Design Conditions	PN63
PMA (Max. Allowable Pressure)	63 barg @ 125 °C
TMA (Max. Allowable Temperature)	400 °C @ 42 barg
PMO (Max. Operating Pressure)	42 barg @ 400 °C
TMO (Max. Operating Temperature)	400 °C @ 42 barg
Max. Cold Hydro Test Pressure	95 barg

PMOB-Max. Operating Back Pressure on outlet should not exceed 80% of inlet pressure.

Min. Operating Pressure for satisfactory operation: 0.5 barg.

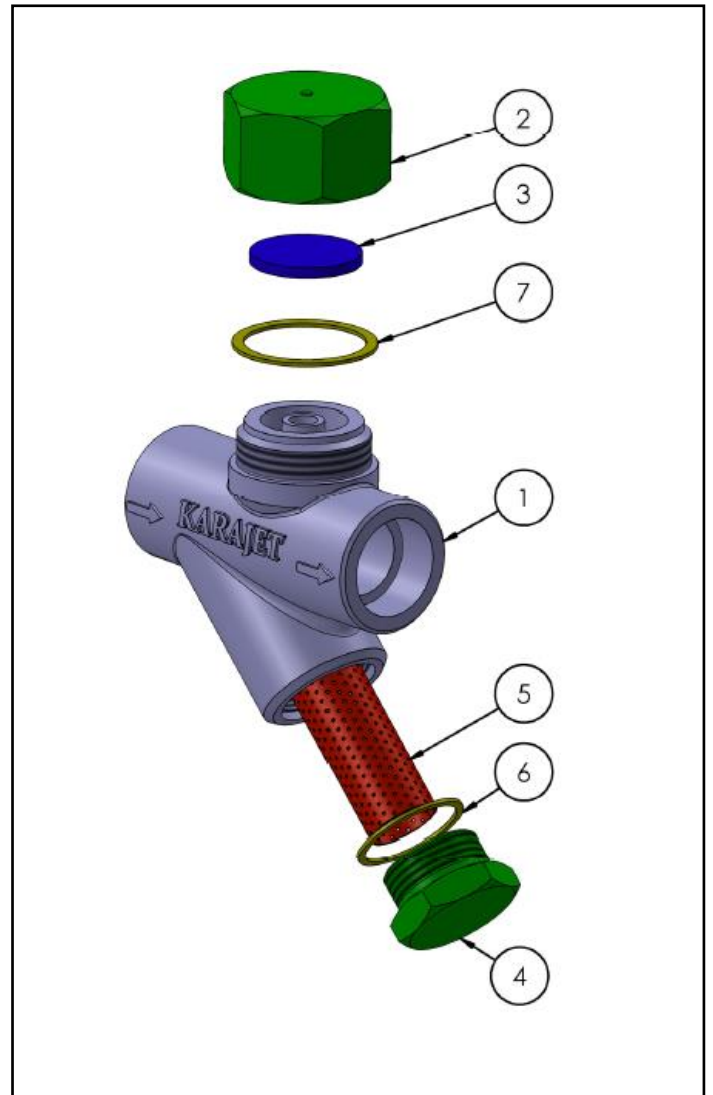
## Steam Trap

### Material:

No.	Part	Material
1	Body	CS A105
2	Cap	CS A105
3	Disk	SS 420
4	Strainer Cap	CS A105
5	Strainer Screen	A240 Gr.304
6	Strainer Gasket	A240 Gr.304
7	Cap Gasket	A240 Gr.304

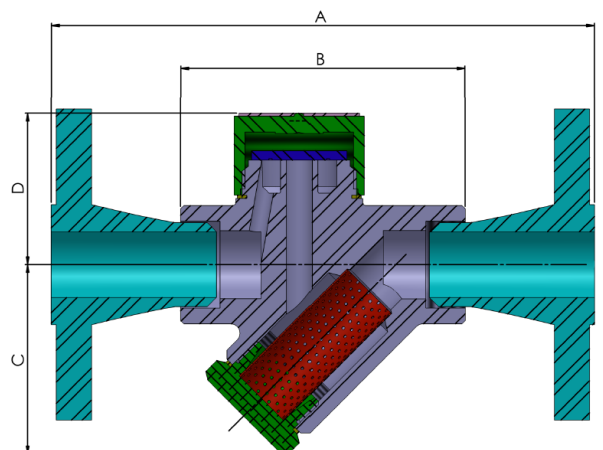
### Spare Part List:

No.	Part No.	Part
1	3	Disc
2	5	Strainer screen
3	5, 6	Gaskets
4	4	Strainer cap



### Dimensions (mm):

Size	A	B		C	D	Weight (kg)		
		#150	#300			SW	#150	#300
0.5"	90	160	170	60	47	1.2	2.1	2.6
0.75"	90	172	182	60	47	1.1	2.5	3.6
1"	96	182	192	66	53	1.9	3.9	5



# KARAJET

## Steam Trap

**TD52**  
Replaceable

**Thermodynamic**

### Description:

The KARAJET TD52 is an inline repairable carbon steel thermodynamic steam trap with an integral strainer and replaceable seat for ease of maintenance.

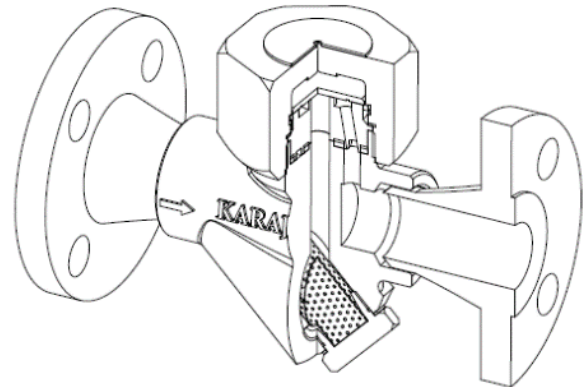
### Size and Pipe Connections:

DN15 to DN25  
Screwed BSPT/NPT/BSP and Socket Weld ends.  
Available with Class 150, 300 and 600 Flanges.  
Other sizes are available for flanged connection by request.

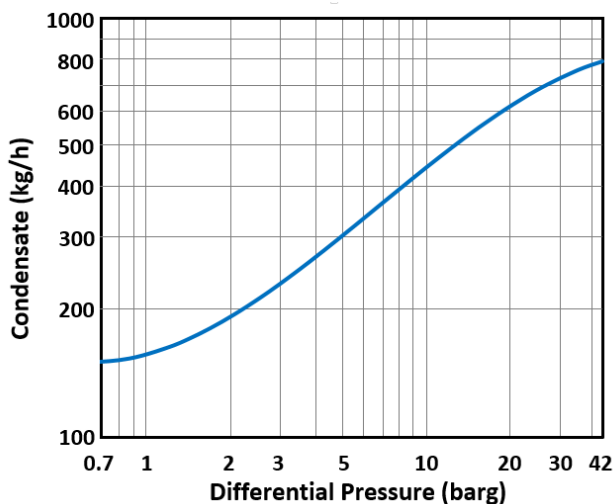
### Material and Options:

Other body materials such as Stainless Steel A182 F304-F316, Stainless Steel 420, Stainless Steel A743CA40 / A743CA40F are available.

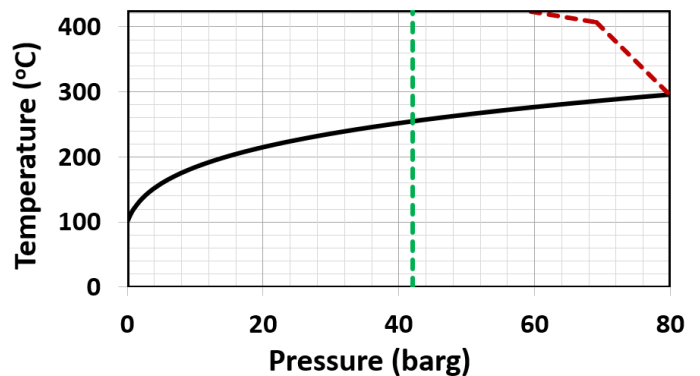
TD42R can be equipped with a bimetal air ring in order to have quicker air venting.



### Capacity Curve:



### Limiting Conditions:



— Saturated Steam Curve

- - - This product should not be used at right side of this line

- - - This product must not be used above this line

Body Design Conditions	PN100
PMA (Max. Allowable Pressure)	80 barg @ 300 °C
TMA (Max. Allowable Temperature)	425 °C @ 57 barg
PMO (Max. Operating Pressure)	42 barg @ 425 °C
TMO (Max. Operating Temperature)	425 °C @ 42 barg
Max. Cold Hydro Test Pressure	120 barg

PMOB-Max. Operating Back Pressure on outlet should not exceed 80% of inlet pressure.

Min. Operating Pressure for satisfactory operation: 0.5 barg.

# KARAJET

## Steam Trap

**TD52**  
Replaceable

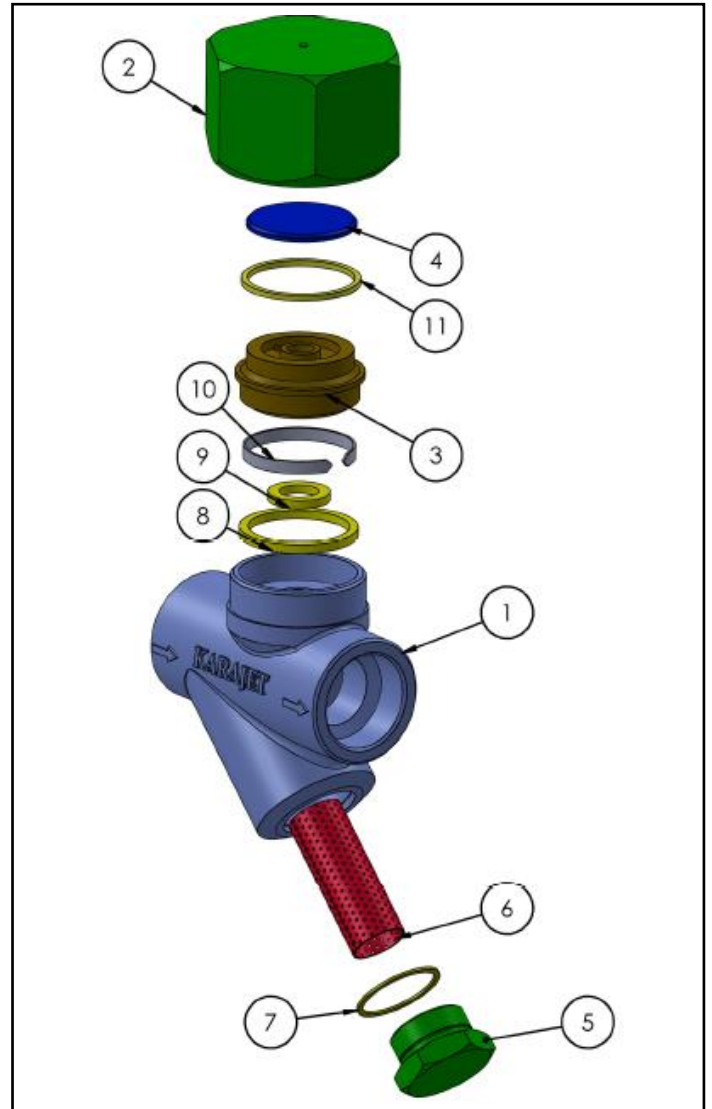
Thermodynamic

### Material:

No.	Part	Material
1	Body	CS A105
2	Cap	CS A105
3	Seat	SS 420
4	Disk	SS 420
5	Strainer Cap	CS A105
6	Strainer Screen	A240 Gr.304
7	Strainer Cap Gasket	A240 Gr.304
8, 9	Seat Gaskets	A240 Gr.304
10	Air Ring	Bimetal
11	Cap Gasket	A240 Gr.304

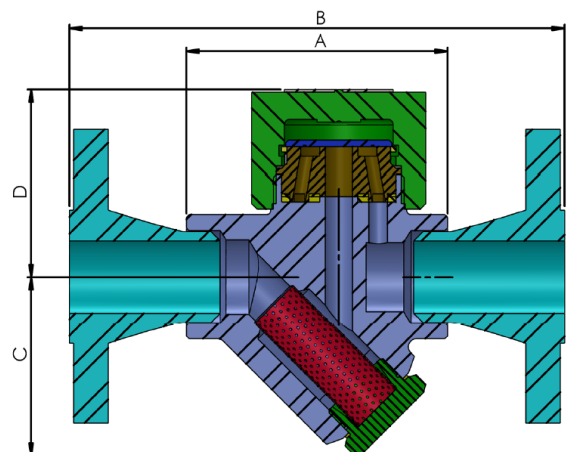
### Spare Part List:

No.	Part No.	Part
1	3, 4	Seat and Disc
2	6	Strainer screen
3	5	Strainer cap
4	7, 8, 9, 11	Gaskets



### Dimensions (mm):

Size	A	B			C	D	Weight (kg)			
		#150	#300	#600			SW	#150	#300	#600
½"	90	160	170	182	60	47	1.2	2.1	2.6	3.0
¾"	90	172	182	194	60	47	1.1	2.5	3.6	4.0
1"	96	182	192	208	66	53	1.9	3.9	5	5.6



## Steam Trap

### Description:

The KARAJET TD62 is a carbon steel maintainable high pressure thermodynamic steam trap with an integral strainer and a replaceable seat for ease of maintenance.

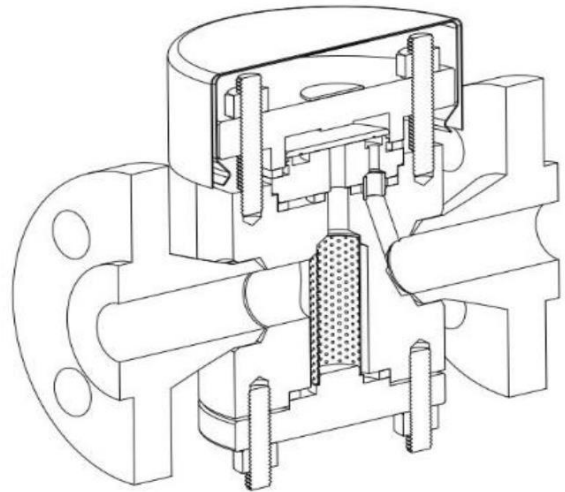
### Size and Pipe Connections:

DN15 to DN25  
Screwed BSPT/NPT/BSP and Socket Weld ends.  
Available with Class 300, 600 Flanges.  
Other sizes are available for flanged connection by request.

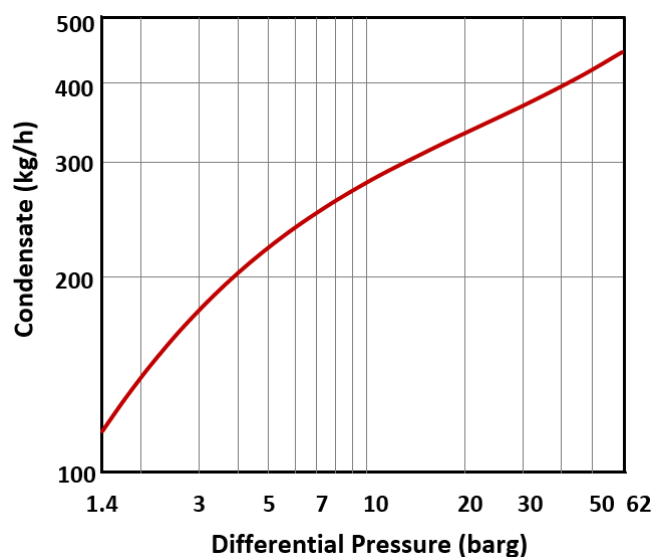
### Material and Options:

Other body materials such as Stainless Steel A105 are available.

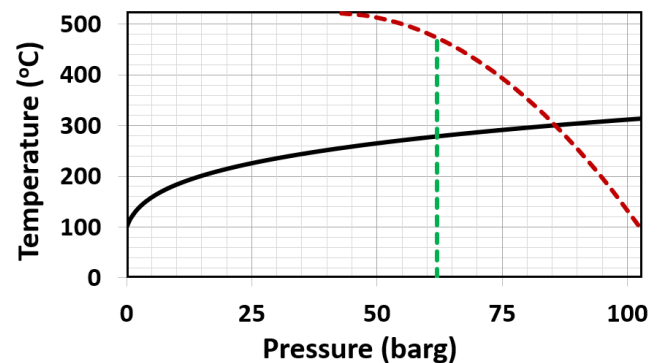
KD62 can be equipped with a bimetal air ring in order to have quicker air venting.



### Capacity Curve:



### Limiting Conditions:



- Saturated Steam Curve
- - - This product should not be used at right side of this line
- - - This product must not be used above this line

Body Design Conditions	ANSI 600
PMA (Max. Allowable Pressure)	103 barg @ 93 °C
TMA (Max. Allowable Temp.)	525 °C @ 42 barg
PMO (Max. Operating Pressure)	62 barg @ 482 °C
TMO (Max. Operating Temp.)	525 °C @ 42 barg
Max. Cold Hydro Test Pressure	155 barg

PMOB-Max. Operating Back Pressure on outlet should not exceed 80% of inlet pressure.

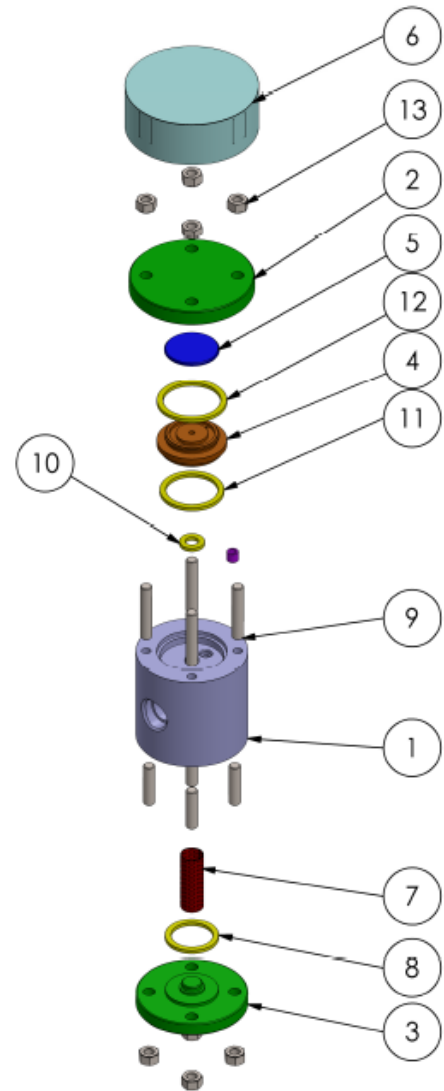
## Steam Trap

### Material:

No.	Part	Material
1	Body	A182 F11/F12
2	Cover	A182 F11/F12
3	Strainer Cap	A182 F11/F12
4	Seat	SS 420
5	Disk	SS 420
6	Insulating Cover	A240 Gr.304
7	Strainer Screen	A240 Gr.304
8	Cap Gasket	Spiral Wound
9	Cover Studs	Carbon Steel
10, 11	Seat Gasket	A240 Gr.304
12	Cover Gasket	A240 Gr.304
13	Cover Nuts	Carbon Steel

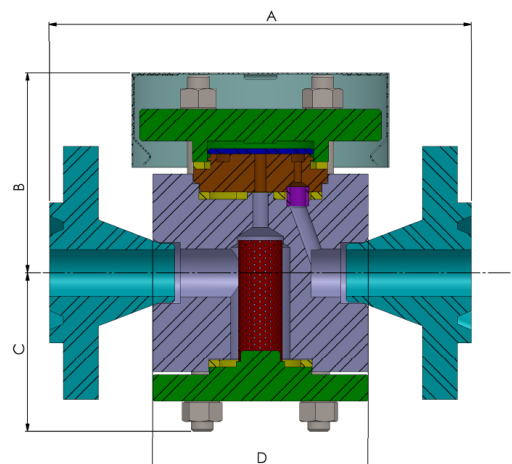
### Spare Part List:

No.	Part No.	Part
1	4, 5	Seat and Disk
2	7	Strainer screen
3	8, 10, 11, 12	Gaskets



### Dimensions (mm):

Size	A		B	C	D	Weight (kg)		
	#300	#600				SW	#300	#600
½"	180	190	88	72	100	7	8.5	8.8
¾"	185	192	88	72	100	7	9.5	10
1"	195	205	88	72	100	7	10	10.5





## Steam Trap

### Description:

The KARAJET TD120 is an alloy steel steam trap for very high pressure applications with an integral strainer and a replaceable seat for ease of maintenance. Their specific application is for superheated mains drainage up to 250 bar g.

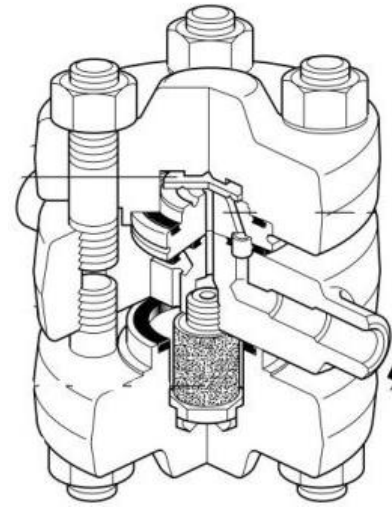
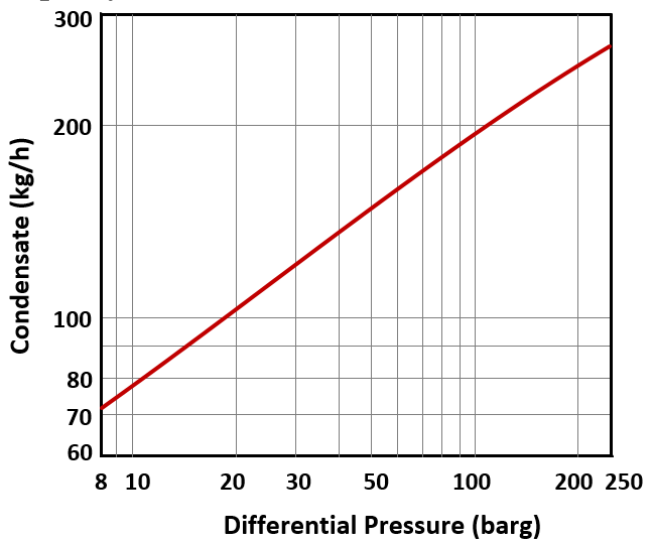
### Size and Pipe Connections:

DN15 to DN25  
Screwed BSPT/NPT/BSP and Socket Weld ends.  
Available with Class 600, 900, 1500 Flanges.  
Other sizes are available for flanged connection by request.

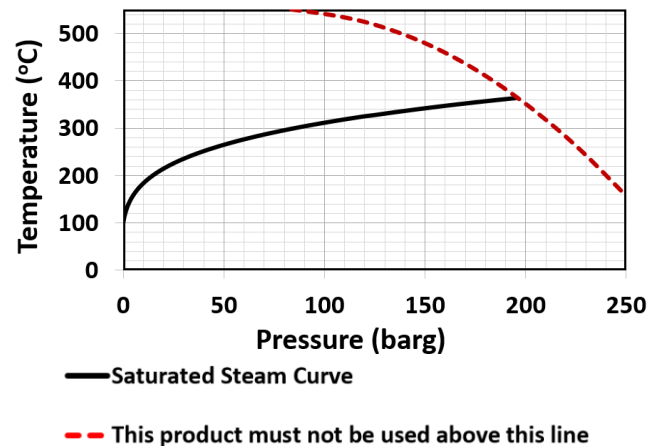
### Material and Options:

Other body materials such as Stainless Steel 420 are available.

### Capacity Curve:



### Limiting Conditions:



Body Design Conditions	PN 250
PMA (Max. Allowable Pressure)	250 barg @ 300 °C
TMA (Max. Allowable Temp.)	550 °C @ 80 barg
PMO (Max. Operating Pressure)	220 barg @ 374 °C
TMO (Max. Operating Temp.)	550 °C @ 80 barg
Max. Cold Hydro Test Pressure	375 barg

PMOB-Max. Operating Back Pressure on outlet should not exceed 50% of inlet pressure.

Minimum operating differential pressure is 8 bar g.

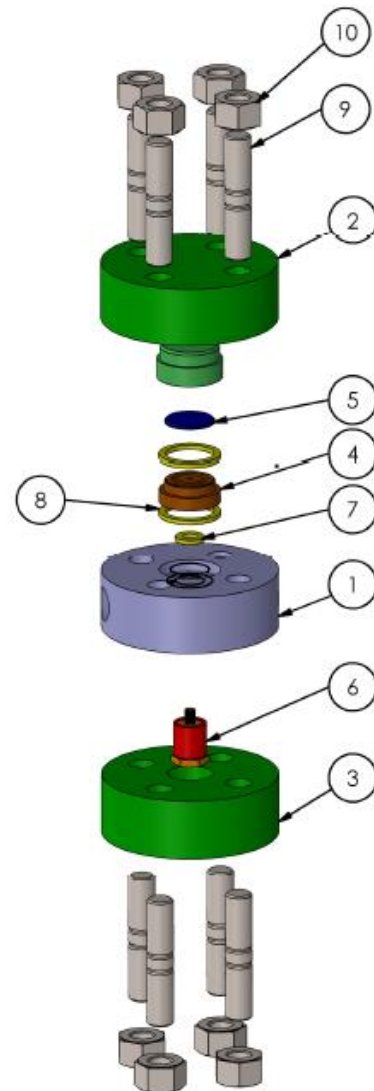
## Steam Trap

### Material:

No.	Part	Material
1	Body	A182 F11 / F12
2	Top Cover	A182 F11 / F12
3	Bottom Cover	A182 F11 / F12
4	Seat	SS 420
5	Disk	SS 420
6	Strainer Assembly	SS 304
7	Inner Seat Gasket	A240 Gr.304
8	Cover gasket	Spiral Wound
9	Cover Studs	Carbon Steel
10	Cover Bolts	Carbon Steel

### Spare Part List:

No.	Part No.	Part
1	5	Disc
2	6	Strainer Assembly
3	7, 8	Gaskets



### Dimensions (mm):

Size	A				Weight (kg)	
	#1500	B	C	D	#1500	
1/2"	245	104	104	135	245	
3/4"	245	104	104	135	245	
1"	245	104	104	135	245	

