

Description

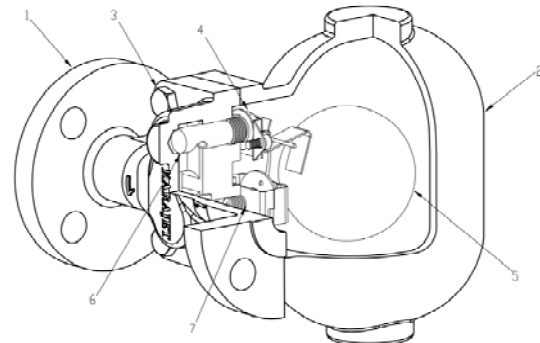
FT44 is a float and thermostatic trap for low to medium pressures. The body is carbon steel and working internals are stainless steel. Both screwed and flanged connections are available. These horizontal traps are easy to maintain

Thermostatic element

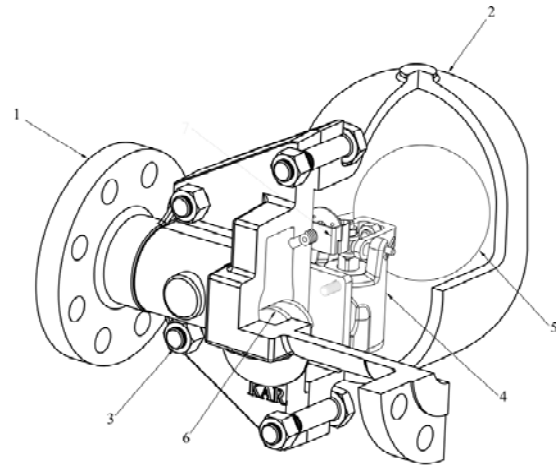
The thermostatic element is designed to vent air in startup and prevent steam loss when operating.

Material

NO.	Part	Material
1	Body	A216WCB
2	Cover	A216WCB
3	Cover bolts and nuts	Carbon steel
4	Valve seat	Stainless steel
5	Ball float and lever	Stainless steel
6	Erosion deflector	Stainless steel
7	Air vent assembly	Stainless steel



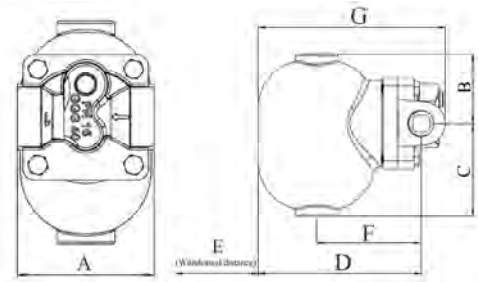
FT44 1"



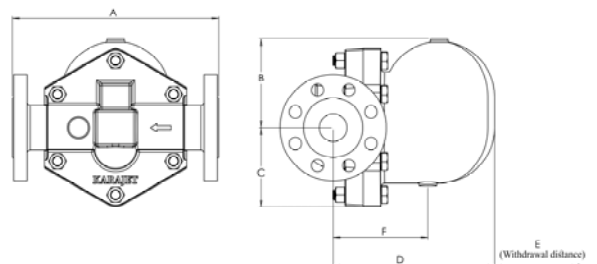
FT44 2"

Dimensions / weights (approximate) in mm and kg

Screwed								
Size	A	B	C	D	E	F	G	Weight
1" HC	120	84	111	195	160	125	224	6.8
1 1/4"	120	84	111	195	160	125	224	6.9
1 1/2"	270	125	125	250	200	147	290	17.5
2"	300	125	125	250	200	147	290	22.0

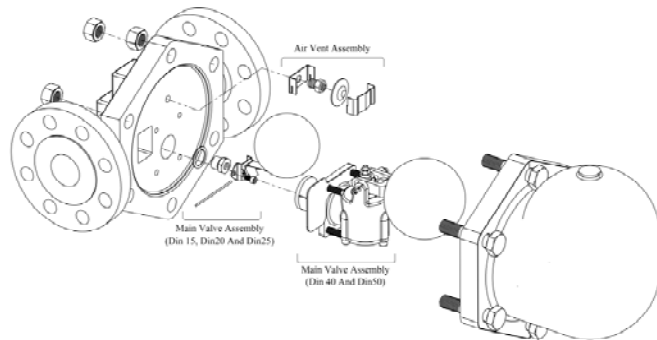


Flanged									
Size	A		B	C	D	E	F	Weight	
	#150	#300						#150	#300
1 1/2"	203	209	84	111	205	120	135	8.3	8.7
3 1/4"	206	213	84	111	205	120	135	8.6	9.3
1"	209	216	84	111	205	170	135	9	10.1
1 1/2"	314	320	138	125	251	200	147	28.5	30.6
2"	314	320	138	125	251	200	147	29.2	30.7



Available spares

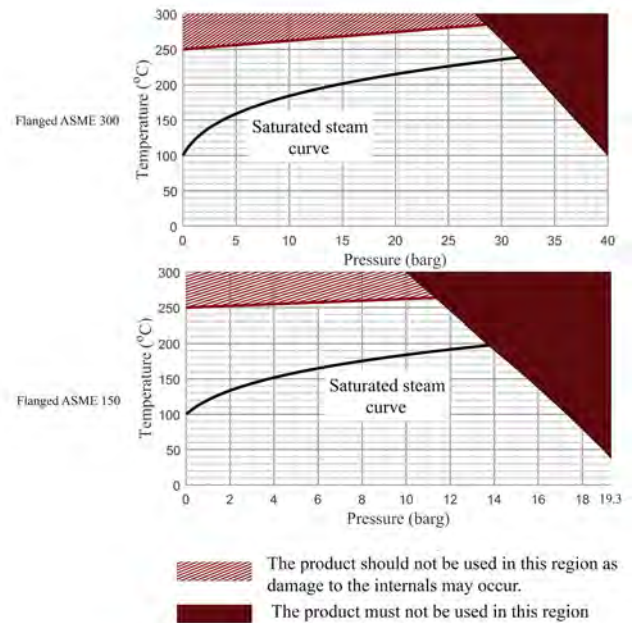
Main valve assembly
Ball float (1 1/2" and 2")
Air vent assembly
Complete set of gaskets



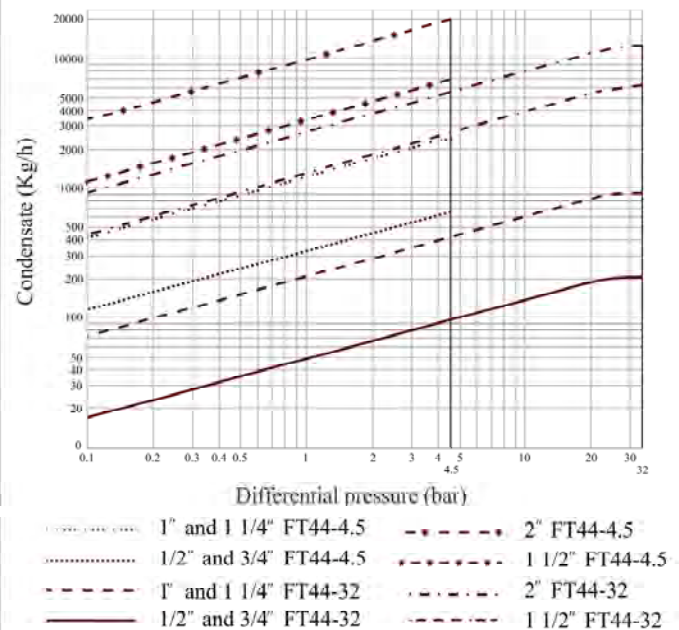
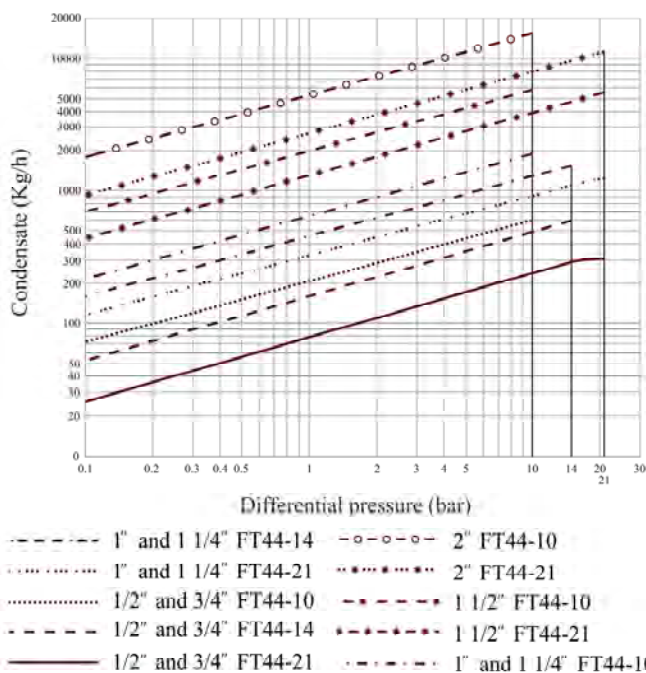
Pressure / temperature limits

# Flange	#150	#300
Body design conditions	PN40	PN40
PMA (Maximum allowable pressure)	19.3 barg @ 37.8°C	40 barg @ 100 °C
TMA (Maximum allowable temperature)	300 °C @ 10barg	300 °C @ 27.5 barg
PMO (Maximum operating pressure for saturated steam service) ^{Note1}	13.8 barg @ 197.2°C	32 barg @ 239 °C
TMO (Maximum operation temperature)	263.7 °C @ 11.3barg	285 °C @ 28.5barg
Min. allowable temperature	-10 °C	-10 °C
Min. operating temperature For lower temperatures consult Karajet.	0 °C	0 °C
Max. cold hydraulic test pressure ^{Note2}	27 barg	60 barg
ΔPMX (Max differential pressure)	Refer to capacity charts below.	

Note1: The 1 1/2" and 2" traps are limited to a PMO equal to ΔPMX.
Note2: With internals fitted, test pressure must not exceed ΔPMX.



Capacities

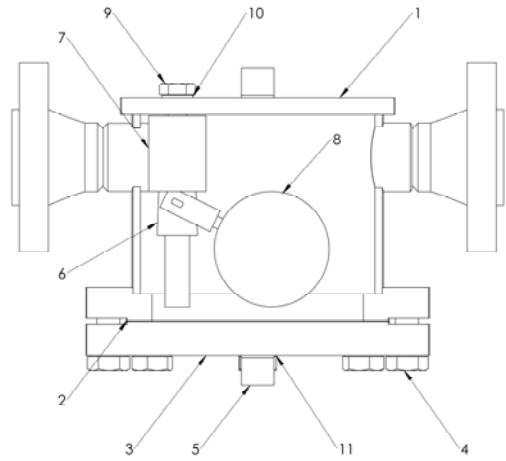


Description

FT1310 is a low capacity mechanical steam trap for medium pressures. The trap's internals are anti corrosion. Air vent can be installed for FT 1310. A drained nozzle is devised for the trap. These horizontal traps are easy to maintain.

Material

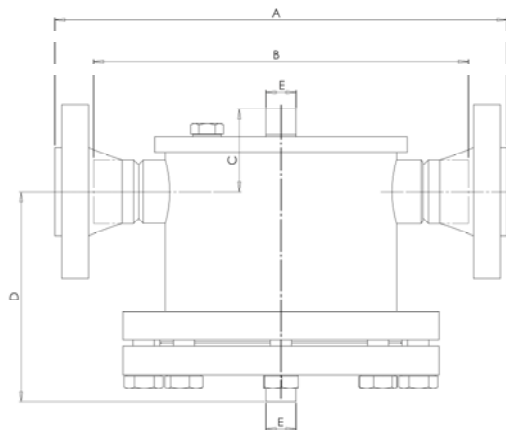
NO.	Part	Material
1	Body	SA 516
2	Body gasket	Soft iron
3	Cover	SA 516
4	Bolts	ASTM A193 Gr.B16
5	Drain plug	SA 234
6	Float control	Stainless steel
7	Valve	Stainless steel
8	Ball float	Stainless steel
9	Positioner	ASTM A193 Gr.B16
10	Bolt gasket	Soft iron
11	Drain plug gasket	Soft iron



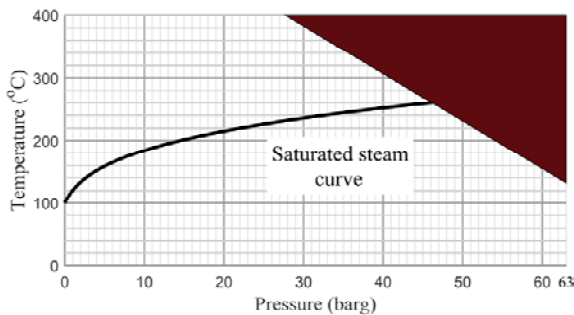
FT1310

Dimensions / weights (approximate) in mm and kg

		1/2"	1"	1 1/2"	2"
A		390	406	420	428
B		317	330	348	355
C		78	78	78	78
D		200	200	200	200
E		G 1/2"	G 1/2"	G 1/2"	G 1/2"
Weight	screwed	37.5	38	39	40.5
	#600	39.5	41.5	45	47

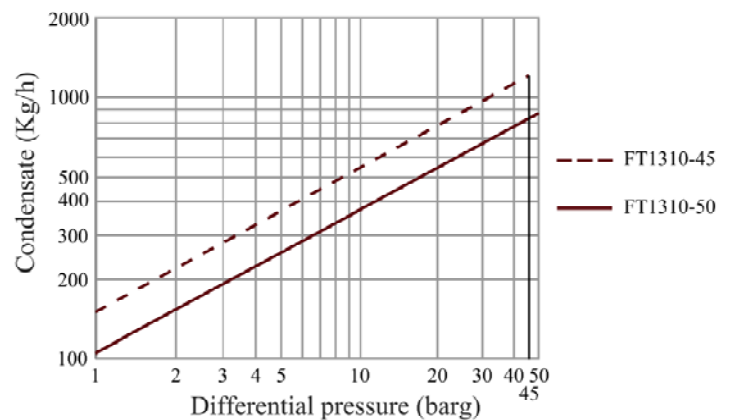


Pressure / temperature limits



Body design conditions	PN63/64/100 and ANSI B16.5 class 600
PMA (Max. allowable pressure)	63 bar g
TMA (Max. allowable temp.)	400 °C
Max. cold hydraulic test pressure	95 barg

Capacities



Available spares

Internal valve
Gaskets

Description

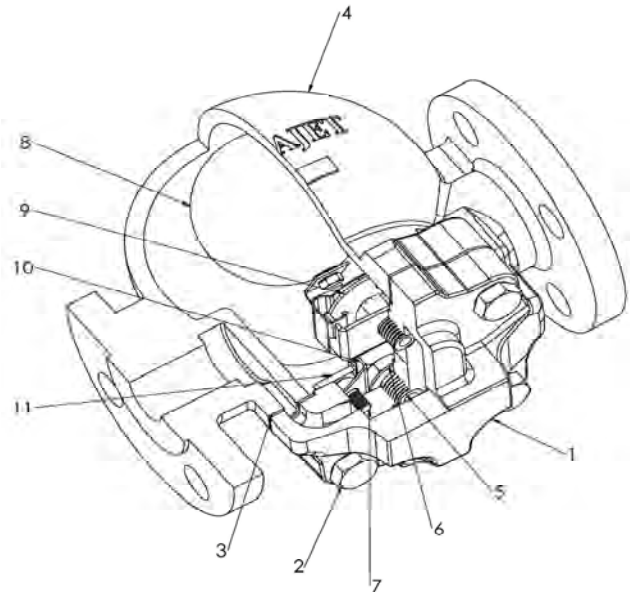
FT14 spherical, is designed for low to medium capacities with reliable construction. It is a ball float steam trap with anti corrosion working internals and air venting facility. These horizontal /vertical traps are easy to maintain.

Thermostatic element

The thermostatic element is designed to vent air in startup and prevent steam loss when operating.

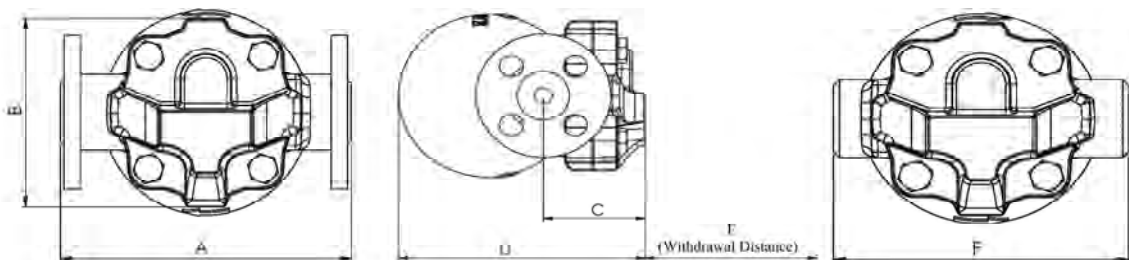
Material

NO.	Part	Material
1	Body	Cast iron
2	Cover bolts	Carbon steel
3	Cover gasket	Reinforced exfoliated graphite
4	Cover	Cast iron
5	Valve seat	Stainless steel
6	Valve seat gasket	Stainless steel
7	Pivot frame assembly screws	Stainless steel
8	Ball float and lever	Stainless steel
9	Air vent assembly	Stainless steel
10	Pivot frame	Stainless steel
11	Pivot pin	Stainless steel



FT14 Spherical

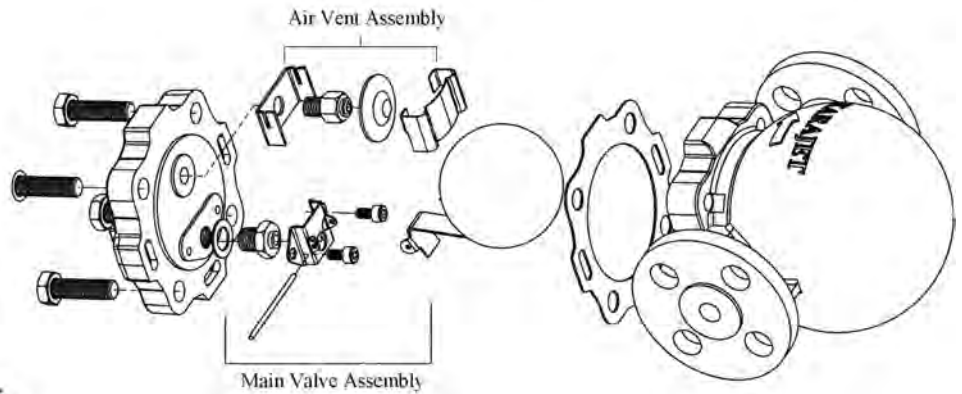
Dimensions / weights (approximate) in mm and kg



Size	A		B	C	D	E	F	Weight		
	#150	#300						screwed	#150	#300
1/2"	167.2	173.4	110	68	164.5	120	148	4.12	4.9	5.3
3/4"	170.5	176.6	110	68	164.5	120	148	4.07	5.3	6
1"	173.4	180	110	68	164.5	120	148	4	5.7	6.6

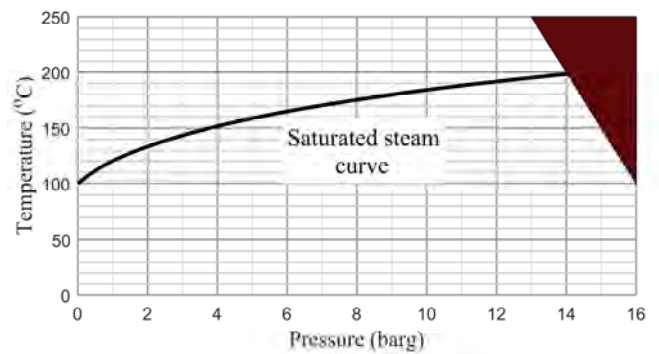
Available spares

Main valve assembly with float
Air vent assembly
Steam lock release and air vent assembly
Cover gasket (packet of 3)
Maintenance kit



Pressure / temperature limits

	Spherical
Body design conditions	PN16
PMA (Max. allowable pressure)	16 barg @ 100 °C
TMA (Max. allowable temp.)	250 °C @ 13 barg
PMO (Max. operating pressure for saturated steam service)	14 barg
TMO (Max. operation temp.)	250 °C @ 13 barg
Min. allowable temp.	-10 °C
Min. operating temp.	0 °C
For lower temperatures consult Karajet.	
Max. cold hydraulic test pressure	24 barg



The product must not be used in this region

Capacities

