

Description

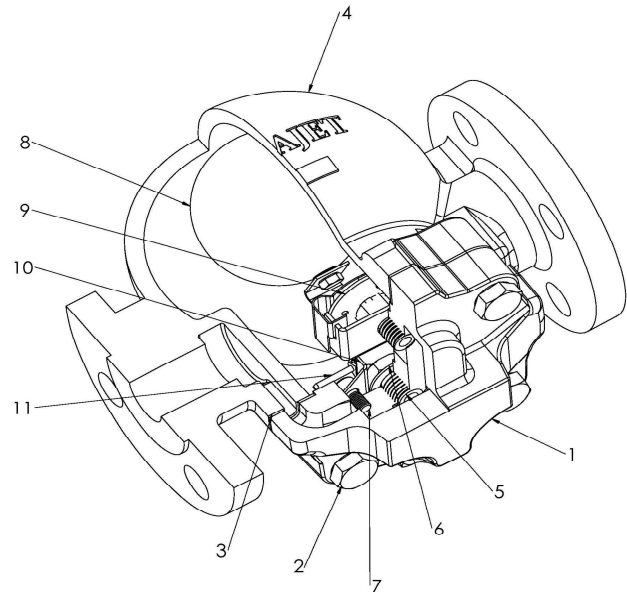
FT14 spherical, is designed for low to medium capacities with reliable construction. It is a ball float steam trap with anti corrosion working internals and air venting facility. These horizontal /vertical traps are easy to maintain.

Thermostatic element

The thermostatic element is designed to vent air in startup and prevent steam loss when operating.

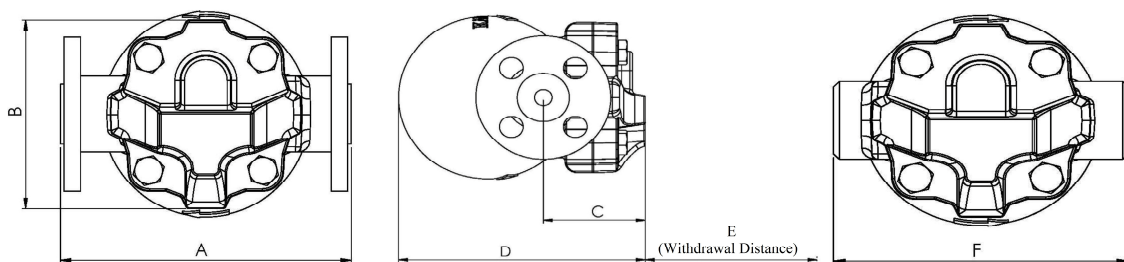
Material

NO.	Part	Material
1	Body	Cast iron
2	Cover bolts	Carbon steel
3	Cover gasket	Reinforced exfoliated graphite
4	Cover	Cast iron
5	Valve seat	Stainless steel
6	Valve seat gasket	Stainless steel
7	Pivot frame assembly screws	Stainless steel
8	Ball float and lever	Stainless steel
9	Air vent assembly	Stainless steel
10	Pivot frame	Stainless steel
11	Pivot pin	Stainless steel



FT14 Spherical

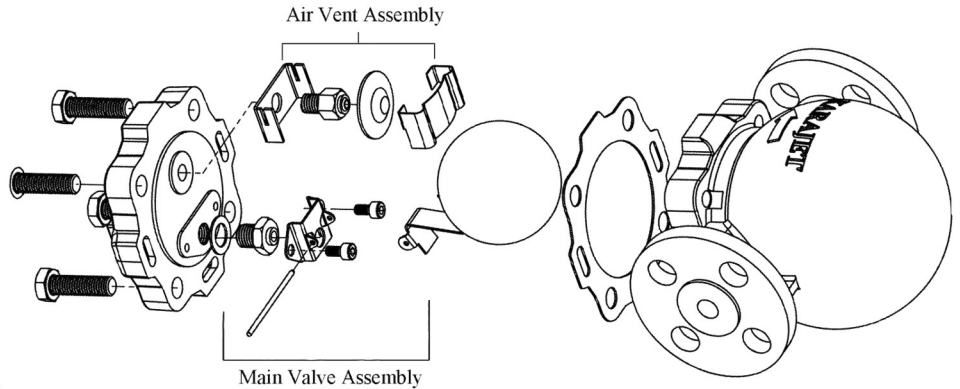
Dimensions / weights (approximate) in mm and kg



Size	A		B	C	D	E	F	Weight		
	#150	#300						screwed	#150	#300
1/2"	167.2	173.4	110	68	164.5	120	148	4.12	4.9	5.3
3/4"	170.5	176.6	110	68	164.5	120	148	4.07	5.3	6
1"	173.4	180	110	68	164.5	120	148	4	5.7	6.6

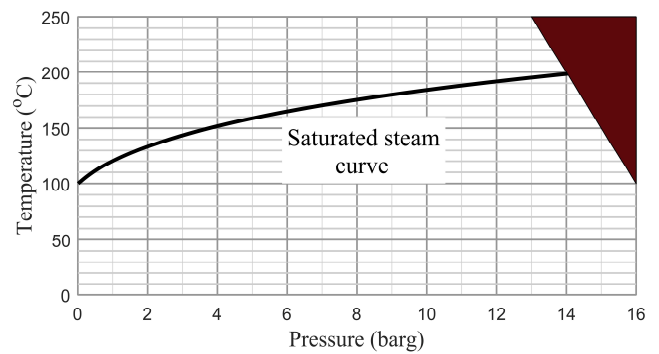
Available spares

Main valve assembly with float
Air vent assembly
Steam lock release and air vent assembly
Cover gasket (packet of 3)
Maintenance kit



Pressure / temperature limits

	Spherical
Body design conditions	PN16
PMA (Max. allowable pressure)	16 barg @ 100 °C
TMA (Max. allowable temp.)	250 °C @ 13 barg
PMO (Max. operating pressure for saturated steam service)	14 barg
TMO (Max. operation temp.)	250 °C @ 13 barg
Min. allowable temp.	-10 °C
Min. operating temp.	0 °C
For lower temperatures consult Karajet.	
Max. cold hydraulic test pressure	24 barg



■ The product must not be used in this region

Capacities

